

Practicing Public Health in a non- Public Health Agency

Rebecca Jackson is an Epidemiologist
in
Industrial Relations

Health Department Projects using Workers Comp Data



Information Collected by Workers Comp

- **Employee and Employer**

| | |
|------------------------|----------------------------------|
| Occupation Description | Bus Operator (P/T) |
| Employer Name | Metropolitan Transit Au |
| Class Code | 7382 Bus or Limousine Operations |
| Industry Code | |

- **Injury**

| | | |
|----------------------|---|--|
| Part of Body Injured | 30 | Upper Extremities/Multiple Upper Extremities |
| Cause of Injury | 60 | Strain/Strain or Injury by, NOC |
| Nature of Injury | 52 | Sprain or strain |
| Injury Description | Repetitive continuous use and turning of both arms while operating the bus has caused severe pain, to upper extremities both hands, wrist, arms, sh | |

- **Medical Bills – ICD-9**

| | |
|-------|-----------------|
| 847.1 | Thoracic Sprain |
| 847.2 | Lumbar Sprain |

- **Time Lost**

Information Collected by Workers Comp

- **Employee and Employer**

| | |
|------------------------|----------------------------------|
| Occupation Description | Bus Operator (P/T) |
| Employer Name | Metropolitan Transit Au |
| Class Code | 7382 Bus or Limousine Operations |
| Industry Code | |

- **Injury**

| | | |
|----------------------|---|--|
| Part of Body Injured | 30 | Upper Extremities/Multiple Upper Extremities |
| Cause of Injury | 60 | Strain/Strain or Injury by, NOC |
| Nature of Injury | 52 | Sprain or strain |
| Injury Description | Repetitive continuous use and turning of both arms while operating the bus has caused severe pain, to upper extremities both hands, wrist, arms, sh | |

- **Medical Bills – ICD-9**

| | |
|-------|-----------------|
| 847.1 | Thoracic Sprain |
| 847.2 | Lumbar Sprain |

- **Time Lost**

Workers' Compensation Information System (WCIS)

- Electronic repository
- Submitted by claims administrators
- Two parts
 - First Report of Injury (FROI) and Subsequent Report of Injury (SROI)
 - Medical bill payment data

Workers' Comp System Size 2013



4.4 million
transactions

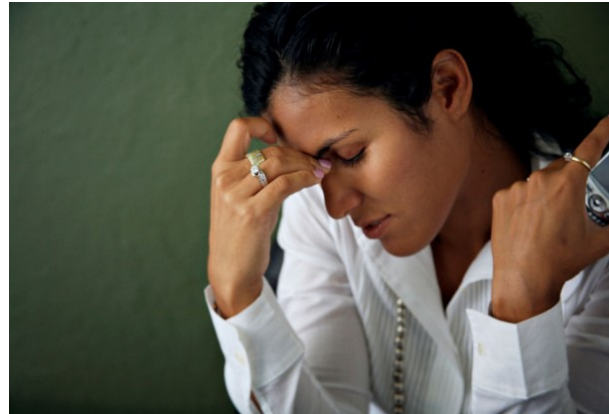
572,317 FROI

272,317
SROI





WCIS Research Projects in 2014





What's an Epi to do?

- Industry and occupation as risk factors
- Case definitions
- Validation

What's an Epi to do?

- Industry and occupation as risk factors
- Case definitions
- Validation

Make it more like “surveillance”

You have a code for that?



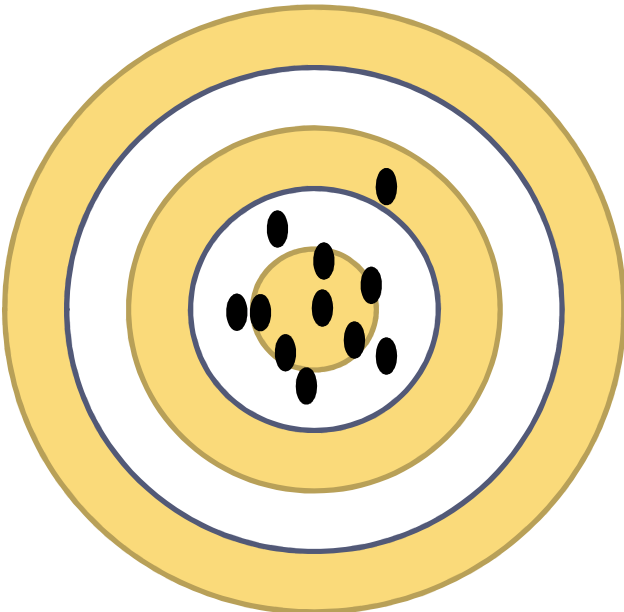
A Case Definition for Workplace Violence

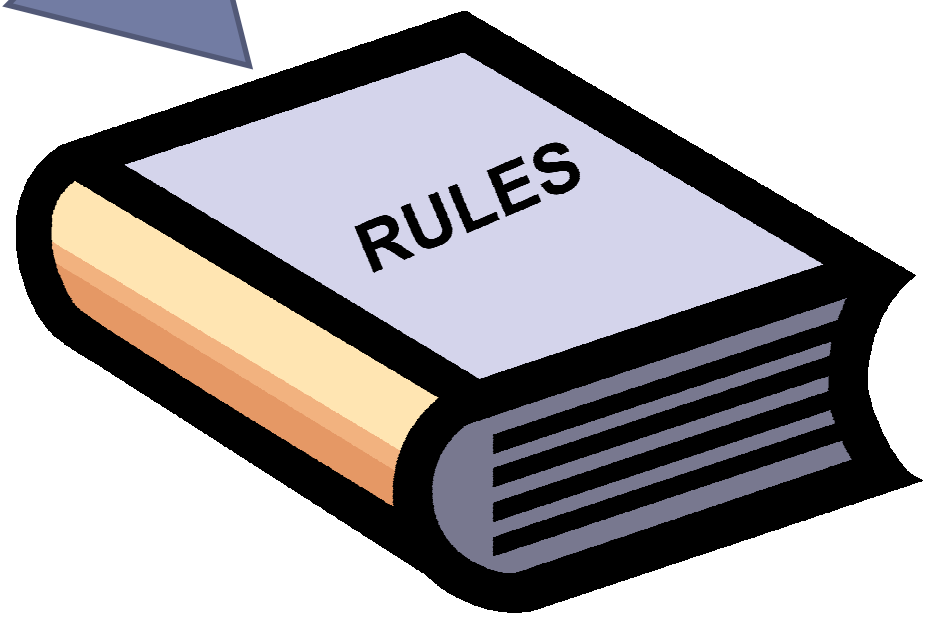
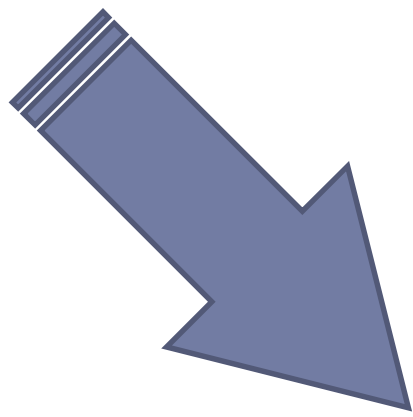
- **Cause of injury** fellow worker, patient of other person, but only if it involves punch, kick, or stab, or shove
- **Person in the act of a crime**

SQL Coding

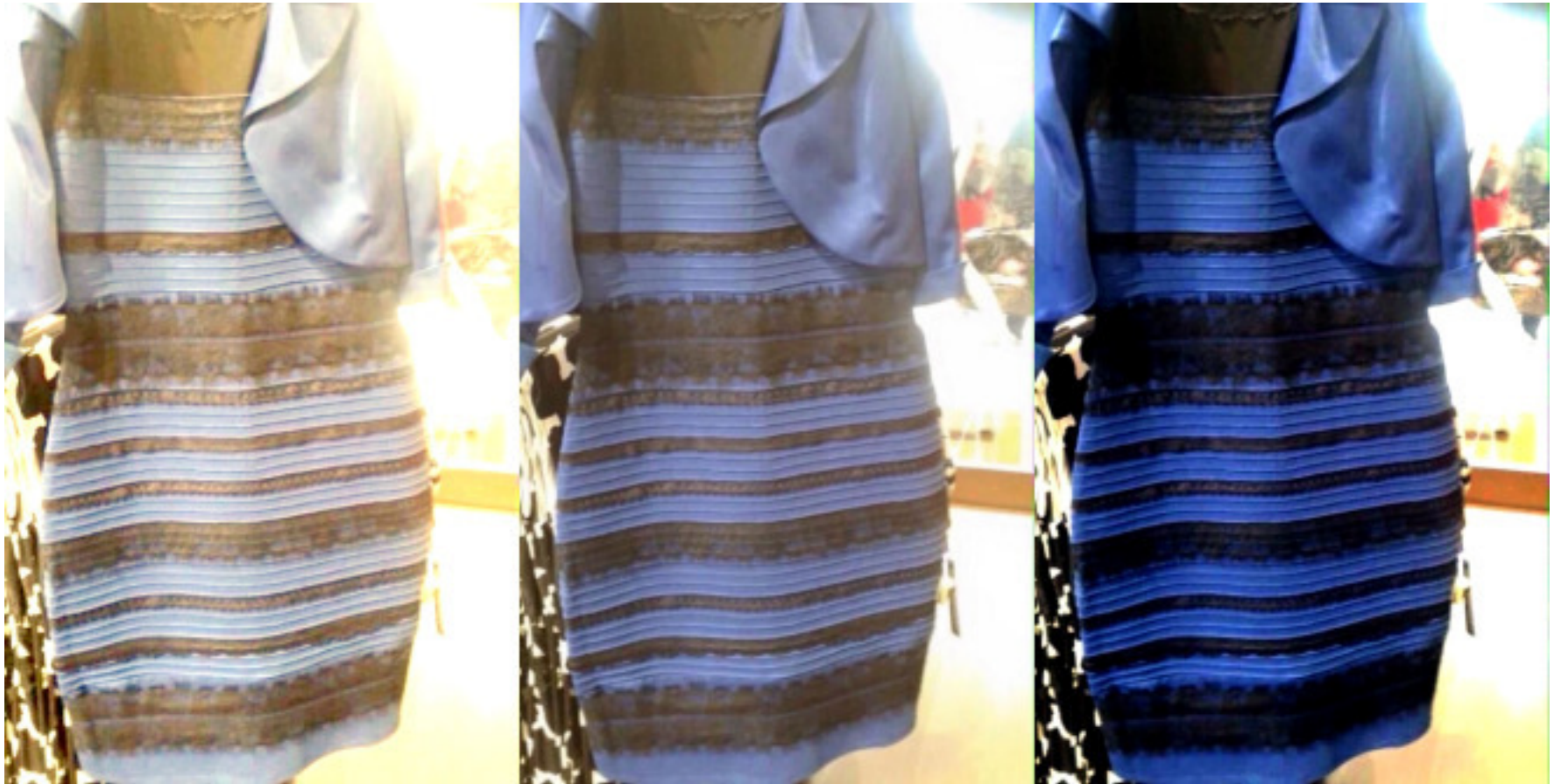
- Assault, strangled or stranggled, combat, threat
- Robb but not throbb
- Stab but not stable
- Violent but not non-violent

Validation





Why does collaboration work?



Why does collaboration work?

