

USING TRUSTED RESEARCH FACILITATORS TO ASSESS TRIBAL BISON WORKER HAZARDS

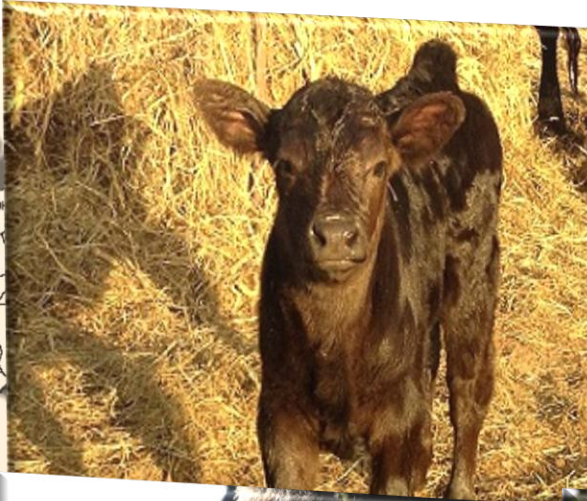
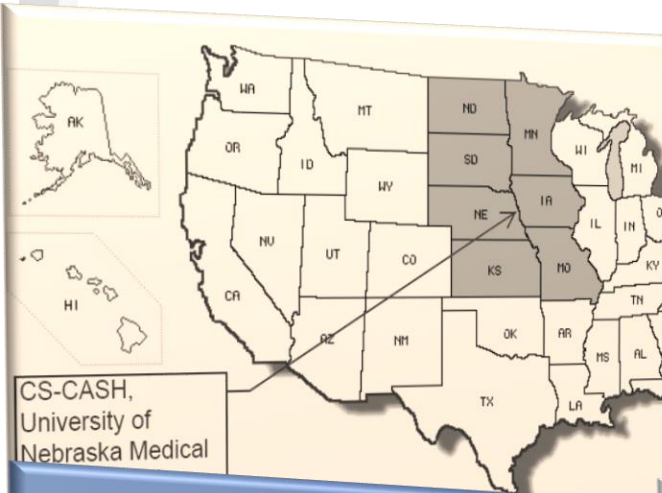
ELLEN DUYSEN, MPH
CENTRAL STATES CENTER FOR AGRICULTURAL SAFETY AND HEALTH

EXPANDING RESEARCH PARTNERSHIPS

DENVER CO JUNE 21-23, 2017



CENTRAL STATES CENTER FOR AGRICULTURAL SAFETY AND HEALTH NIOSH AFF FUNDED CENTER





Spiritually and economically important



INTER TRIBAL BUFFALO COUNCIL

[Board of Directors](#)

DONATE

"To Restore Bison to Indian nations in a manner that is compatible with their spiritual and cultural beliefs and practices."

Homepage

- Home
- Who We Are
- Member Tribes
- Member Services
- Grants
- Events
- Education
- Outreach
- Directory
- Recipes
- Links
- Marketplace
- Employment
- Contact Us

Mission Statement

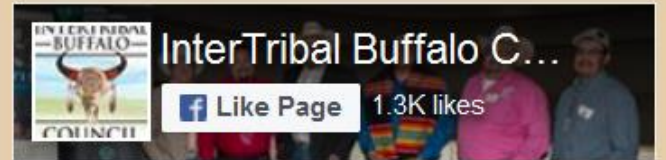
ITBC Mission: "Restoring buffalo to the Indian Country, to preserve our historical, cultural, traditional and spiritual relationship for future generations."

Buffalo Tracks Newsletter Summer

2016

Please read the Summer 2016 edition of the Buffalo Tracks Newsletter! If you have any questions or would like a subscription please call Dianne at (605) 394-9730! Thank you.

[1 attachment](#)



InterTribal Buffalo C...

Like Page 1.3K likes



InterTribal Buffalo Council shared a link.

September 9 at 5:28pm



Bison and Mushroom ...

Lean ground bison, meaty mushroom...

THELEMONBOWL.COM | BY THE I



Worker hazards and risks through the lens of a veterinarian.

Trusted Research Partnerships provided:
Data collection, bison handling expertise, access to work sites and herd managers, invitation to annual conference, dissemination of educational training materials





Dangerous work, minimal research and few interventions

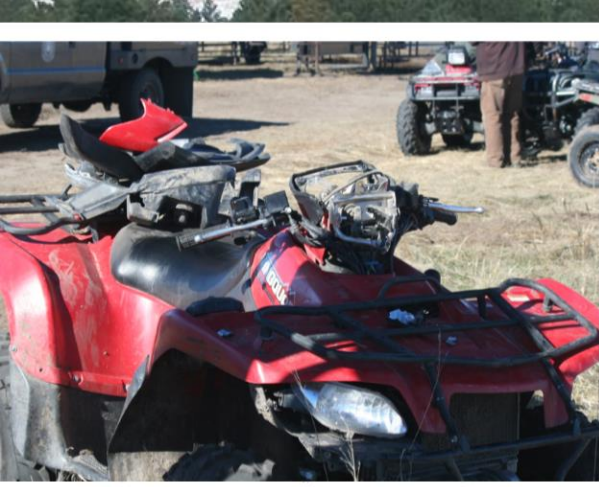


Defining the Occupational Burden



Assess the occupational hazards and risks of bison handlers and the personal determinants that contribute to these -







Bison Worker Safety Survey – observational on-site assessments
Herd Manager Perception of Hazards and Risks Survey – convenience survey



Create interventions and best practices education

OBSERVATIONAL SURVEYS



PERCEPTIONS OF HERD MANAGERS

A word cloud on a black background featuring various terms in different colors and sizes. The most prominent words are 'MODIFICATION', 'FALL', 'CONTACT', 'DUST', 'WEATHER', 'SLIP', 'REPAIR', 'RESPIRATORY', 'INJURIES', 'PANTING', and 'BOOTS'. Other visible words include 'NOISE', 'YOUNG', 'CLOTHING', 'NEEDLES', 'POKING', 'HAIR', 'FACE', 'TRIP', 'ESCAPE', and 'NUMBERS'.

NOISE DUST
WEATHER SLIP REPAIR
YOUNG RESPIRATORY
MODIFICATION FALL CLOTHING
NEEDLES POKING CONTACT HAIR FACE
TRIP ESCAPE NUMBERS INJURIES
PANTING
BOOTS

HAZARDS MAP





Engineered Injury Prevention Strategies

Best Practices Training Guide



BISON HANDLER

TAILGATE TRAINING SAFETY MANUAL



Support for this document provided by the National Institutes of Occupational Safety and Health grant 5U54OH010162-05

Ongoing distribution and training - 68 tribal and nontribal herds

5 Year NIOSH AFF Project 2016-2021





Tribal and Nontribal bison worker surveillance and development of model handling facility



Central States Center for
Agricultural Safety and Health
Funding NIOSH AgFF U54 OH010162